



# Fast Set Quick Order Change Inline Flexo Folder Gluer

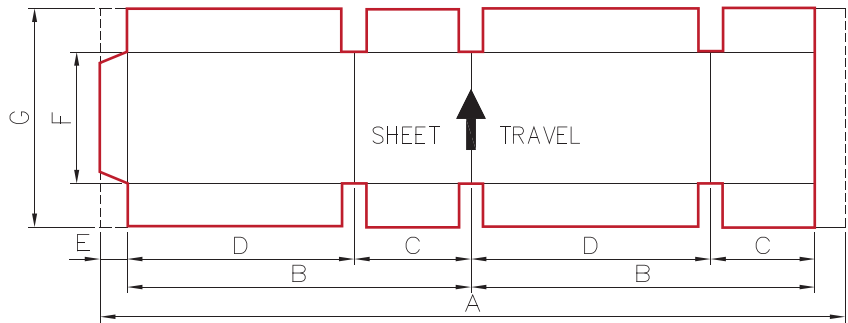
PP6618-FFG | PP1025-FFG | PP1227-FFG | PP1230-FFG



## Latitude Machinery Corp.

No. 154, Section 1, Shin-Hwa Road, Shin-Wu District, Taoyuan City, Taiwan

Tel: +886 3 497 0929      www.lmc.com.tw  
Fax: +886 3 477 1099      sales@lmc.com.tw



### Fast-Set Quick Order Change FFG Specifications

	Model No		PP6618-FFG	PP1025-FFG	PP1227-FFG	PP1230-FFG
	Machine Size	mm	660X1800	1000X2500	1200X2700	1200X3000
A	Sheet Length	MAX.	1800	2500	2700	3000
		MIN.	480	700	700	700
B	Two Panels	MAX.	860	1200	1300	1450
		MIN.	200	340	340	340
C	Small Panel	MAX.	760	950	950	950
		MIN.	80	120	120	120
D	Large Panel	MAX.	780	900	900	900
		MIN.	100	180	180	180
C+D	Distance Between Folding Beams	MIN.	200	340	340	340
E	Glue Lap Width	MAX.	40	50	50	50
F	Box Height	MIN.	50	50	50	50
G	Sheet Width (Standard Regular Feed)	MAX.	633	988	1100	1100
		MIN.	220	280	320	320
G	Sheet Width (Skip Feed)	MAX.	840 (633 Skip Feed Mode Must Be Used)	1350 (988 Skip Feed Mode Must Be Used)	1500 (1100 Skip Feed Mode Must Be Used)	1500 (1100 Skip Feed Mode Must Be Used)
	Printing Area	MAX.	632 x 1700	950 x 2300	1100 x 2500	1100 x 2800
	Die Cutting Area	MAX.	600 x 1700	900 x 2400	1100 x 2600	1100 x 2900
	Non-Fold Sheet	MAX.	1200	1700	1700	1700
	Square Box	MAX.	440	600	650	725
		MIN.	100	180	180	180
	Maximum Machine Speed (Sheet / Min)		400	300	250	250
	Required Power (kW)		151	179	186	186
	Appro. Weight (Metric Tons)		57	80	99	105

\* Required power and weight may change depending on configuration (shown 3-color FFG with diecutter).  
\* The maximum production speed varies according to the types of boxes processed.  
\* Metric measurement is the default specifications.  
\* LMC reserves the right to change specifications without notice.  
\* The above mentioned working dimension is valid for the glue application head at operating side only.



# Fast Set Model – Mini Through 50

## Improve Uptime – Reduce Set Up Time – Eliminate Downtime

- ✓ Operator Friendly / Computer Controlled Machine Axes allows Next Order Set Up while Running.
- ✓ Print Plate Changeover while Machine is in Operation.
- ✓ PLC Control / Motorized Operation of all Machine Axes.
- ✓ No Pit – All Machine Sections Open for Maintenance / Service.

### Control

- Windows 7 or Latest Version Software Based LMC Computer Control System Sets All Nips, and Box Dimension with "Order Manager" for Easy Next Order Pre - setting of All Axes.
- Distributed Control System with HMI Touch Screen & Diagnostic Display on Each Section.
- Ethernet for on Line Support.



### Counter Ejector

- Servo Motor / Drive for Bundle Separator Bars In / Out Movement.
- Servo Motor / Drive for Bundle Separator Bars Up / Down Movement.
- Servo Motor/ Drive for Stacking Lift Table Movement.
- Adjustment of All Sections Motorized Axes Controlled through Independent HMI Touch Screen located at the end of the Counter Ejector.
- Pneumatic Cylinder for Bundle Push Out Mechanism.
- Top Loading Squaring Hopper Ensures Accurate Bundle Count.
- Motorized Bundle Squaring Plate.
- Top Loading Squaring Hopper Ensures Accurate Bundle Count.
- Motorized Back Stop In / Out (Depth) Adjustment with Digital Display on Squaring Unit.
- Bundle Delivery Belt Conveyor & Compression Conveyor.
- Motorized Lateral Adjustment.

### Folder Gluer

- Folder Guide Wheels to Control Manufacturing Joint Gap.
- Rigid and Strong Folding Sword Guiding Folding Panels Till Less than 30 Degree of Fold.
- Extended Vacuum Area Ensures Sheet Stability Throughout Folding Section.
- Independent Closed Loop Speed Control of each Lower Folding Belt by AC Motor / Drive.

### Precreaser Pre-Crease Section

- Computer Controlled and Motorized PreCreaser Heads Nip Adjustment.
- Computer Controlled and Motorized Lateral Head Adjustment by Yokes / Anti-backlash Nuts.
- Two Piece Spring Loaded Bronze Block Yoke Guides.
- Solid Universal Shafts with Gearboxes Synchronize the Linear Bearing Positioning of the Upper and Lower Heads.

### Dwell Vacuum Transfer Section

- Provides Additional Ink Drying Time.
- Damper Controlled Vacuum Zones for Maximum Sheet Control.

### Dual Slot / Score Section

- Moveable Center Slot Head.
- Computer Set Up and PLC / Motorized Control of Trail, Lead and Score Head Board Caliper and Lateral Adjustments.
- Solid Universal Shafts with Gearboxes Synchronize the Linear Bearing Positioning of the Upper and Lower Heads.

### Die – Cut Section

- Anvil Cylinder Speed Synchronization with Die Mount Cylinder.
- Independent Anvil Cylinder Drive for Compensating Die Cut Accuracy
- Anvil Trimmer for Maximum Anvil Covers Life.

### Print Section-Top Print / Bottom Vacuum Transfer

- Change Print Plates for Next Order while Machine Running.
- Motorized Register Adjustment through Planetary Gear System and Ringfeders.
- Wheels Based Vacuum Transfer with Dampers and Variable Vacuum Control.
- Chambered Doctor Blade System and Auto-wash while Running.
- Laser Engraved Ceramic Anilox Roll.

### Feeding Section

- Sun Lead Edge Feeder with Sun Transmission.
- 3 Wheel Shafts or 4 Wheel Shafts Depends on Model.
- Motorized Pull Roll Board Caliper, Backstop, Side Guides and Feed Gates Adjustment.
- Frequency Inverter Drive for Variable Vacuum Control.
- Auto – Zero for Automatic Machine Timing with One – Push Button.
- Vacuum Sheet Cleaner.

